

Where's Spidey?

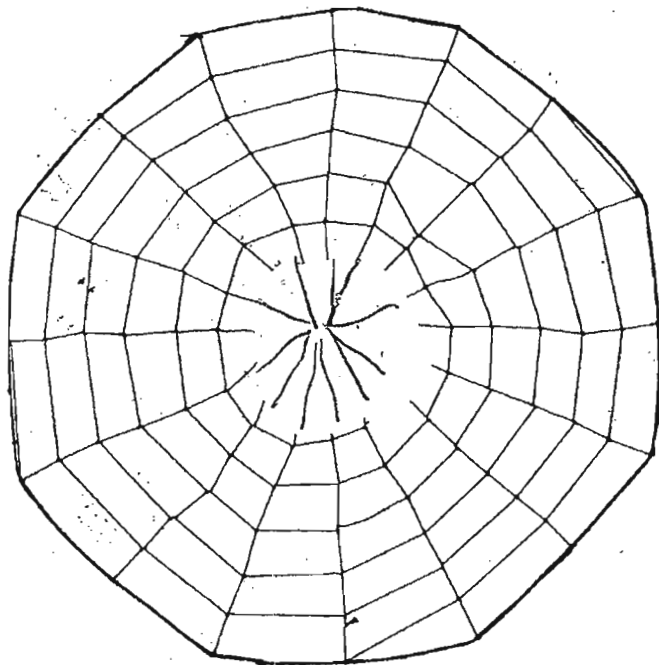


©TeachWithMe.com

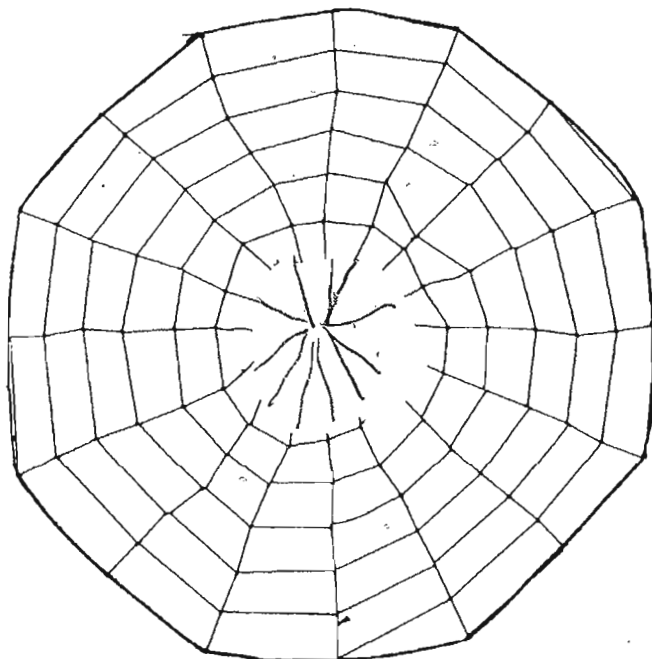
Where's Spidey?



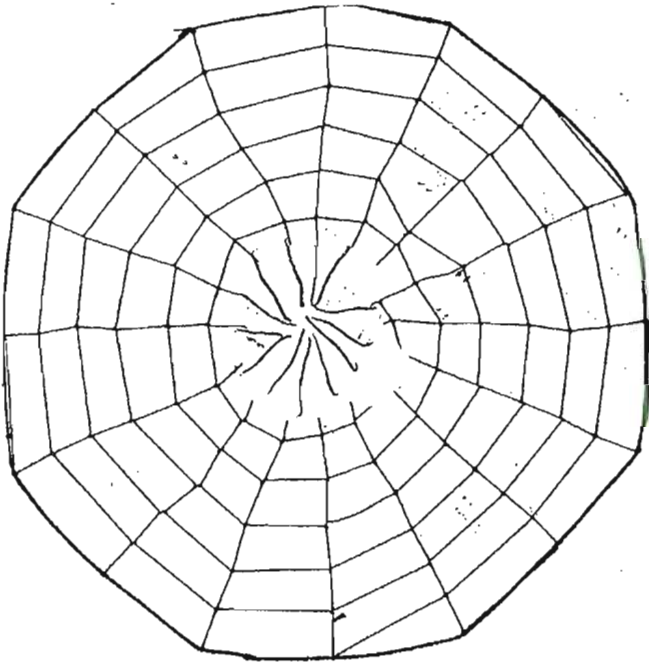
Spidey is on the web.



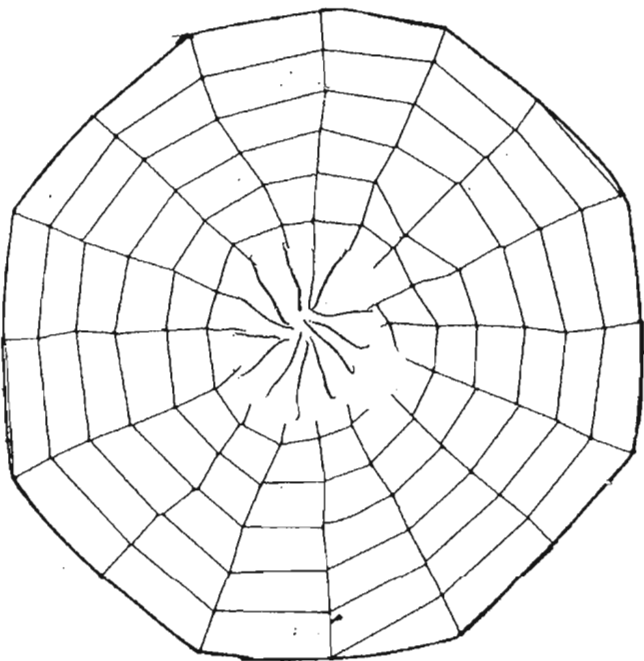
Spidey is on the web.



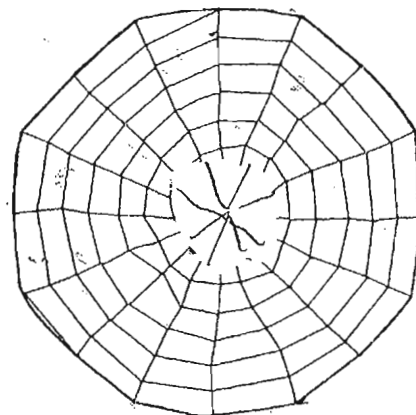
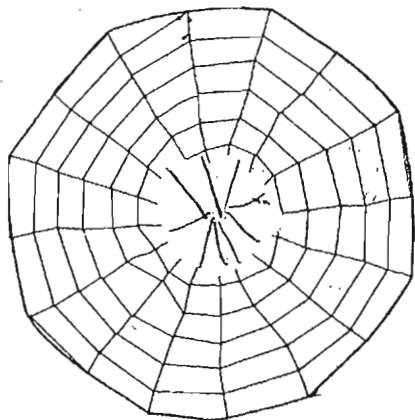
Spidey is beside the web.



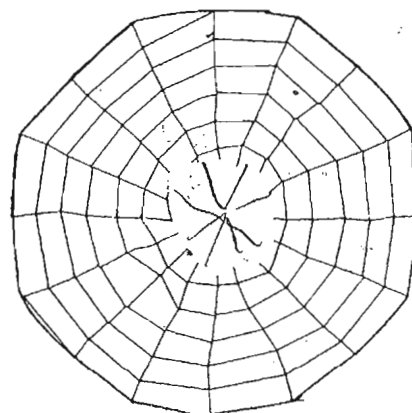
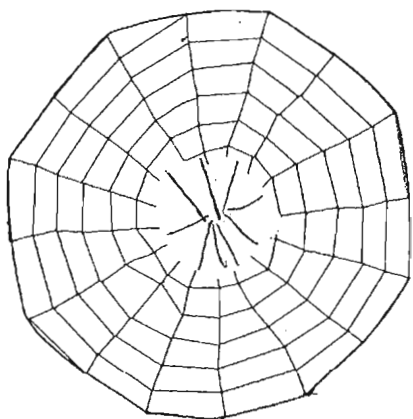
Spidey is beside the web.



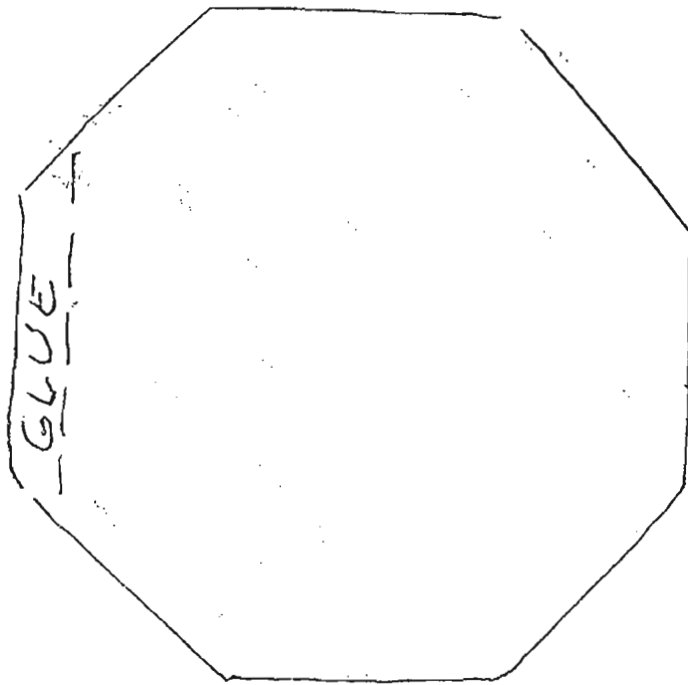
Spidey is between the two webs.



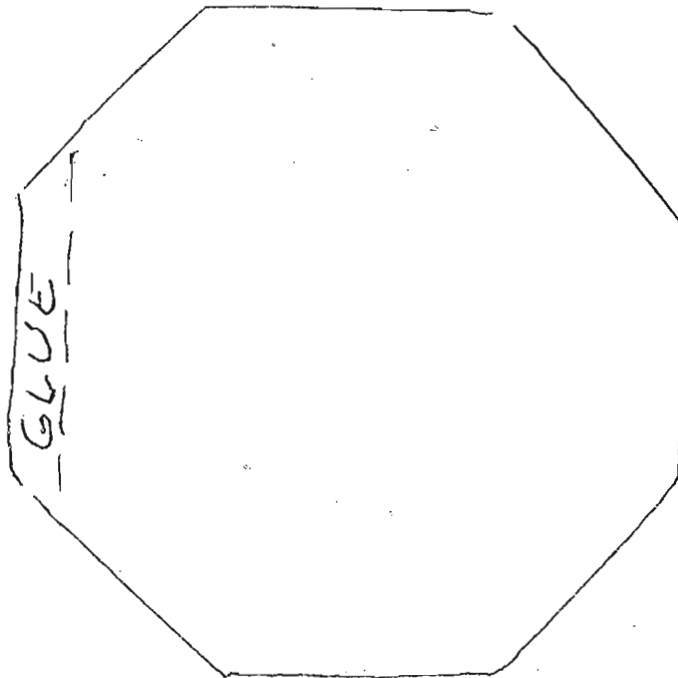
Spidey is between the two webs.



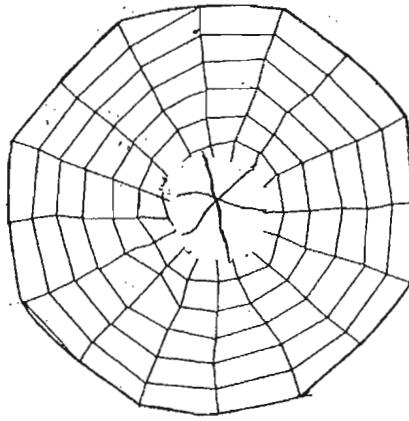
Spidey is hiding behind the web.



Spidey is hiding behind the web.



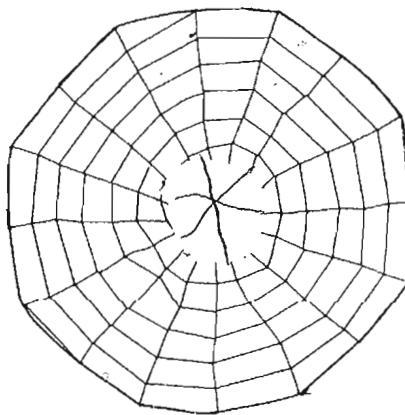
5



Spidey is above the web.

5

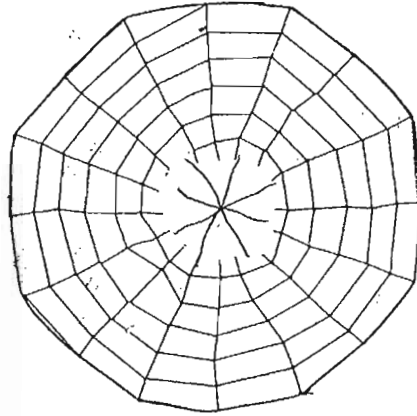
5



Spidey is above the web.

5

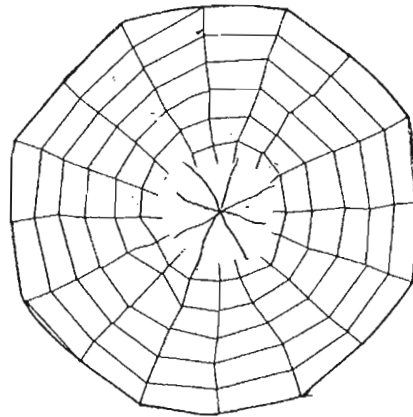
Spidey is under the web.



6

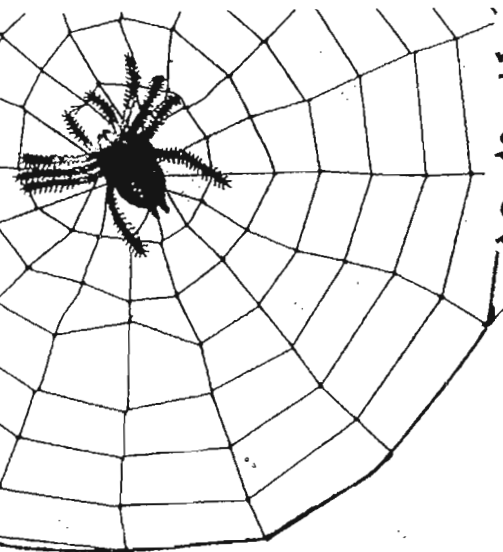
6

Spidey is under the web.

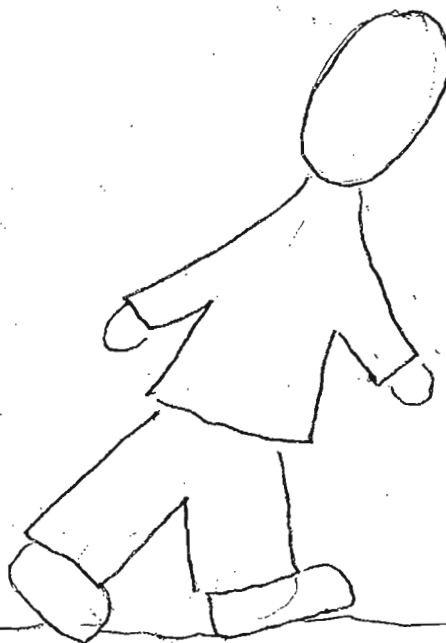


6

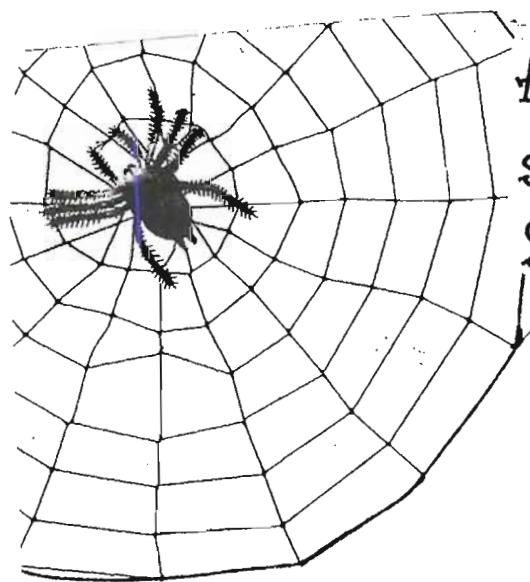
6



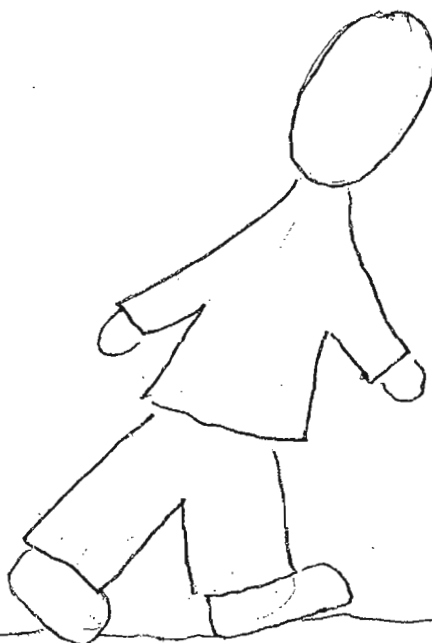
And just like Little Miss Muffet
sitting on her tuffet,
Spidey has frightened me away!



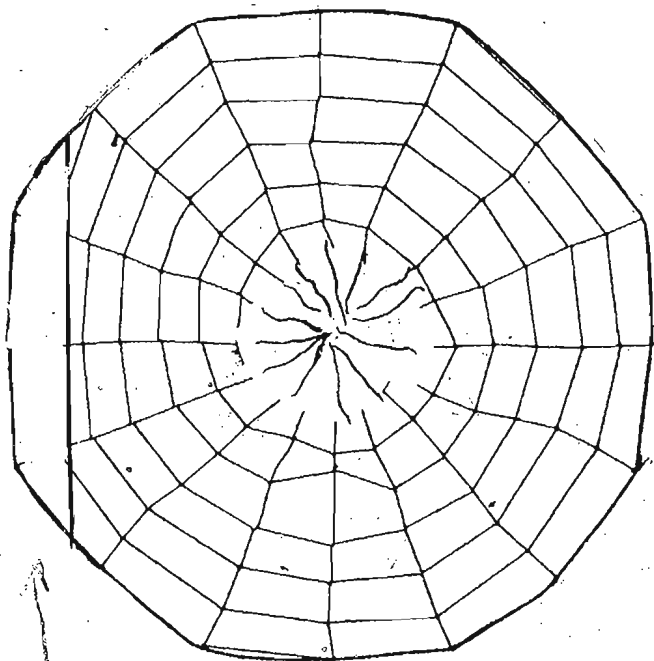
7



And just like Little Miss Muffet
sitting on her tuffet,
Spidey has frightened me away!



7



Glue student's photo on last page

Glue only on this end, so the web opens like a door.

