

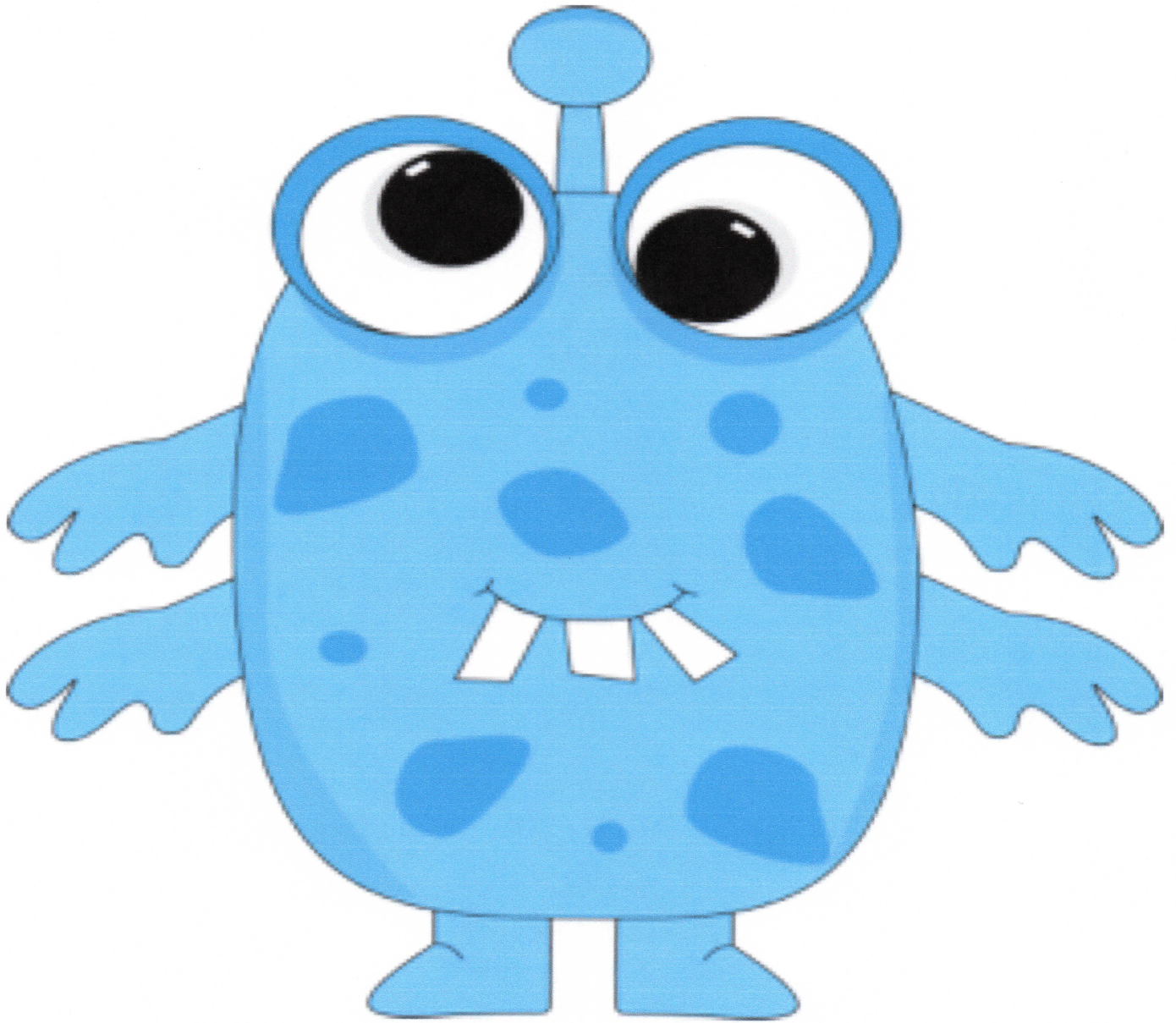
Odd Twad



Sorting Mat.

Put all ODD numbered cards on Twad's mat.

Even Shteven

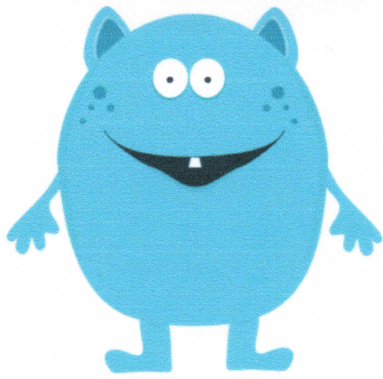


Sorting Mat.

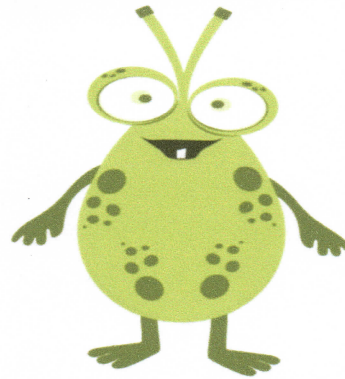
Put all EVEN numbered cards on Shteven's mat.



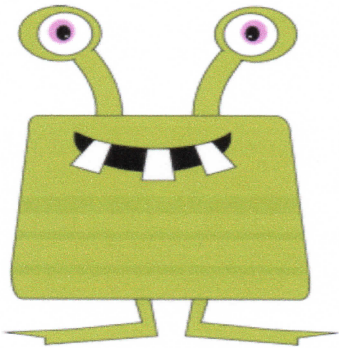
Sort the odd & even cards onto Twad's
or Shteven's Math Mats.



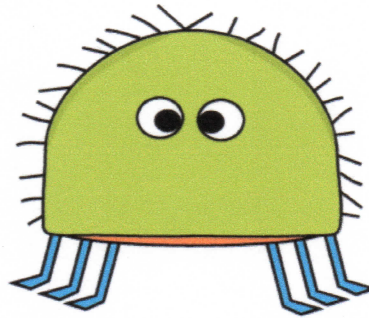
9



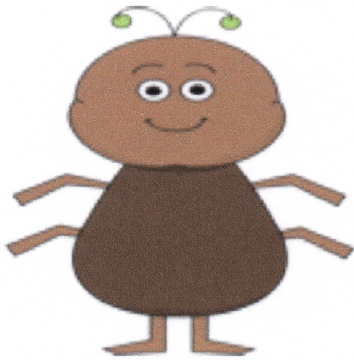
10



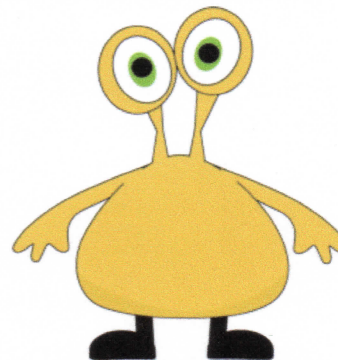
11



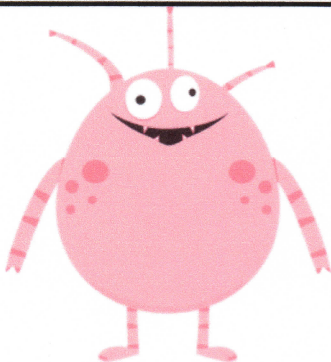
12



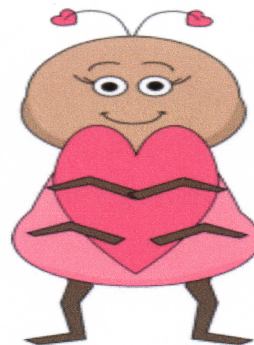
13



14

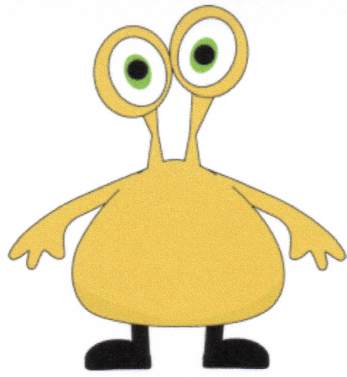


15

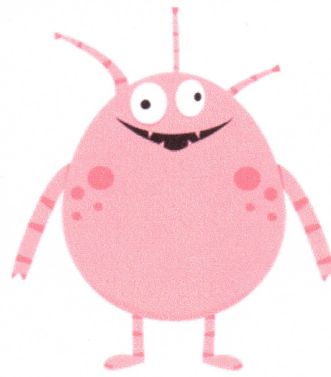


16

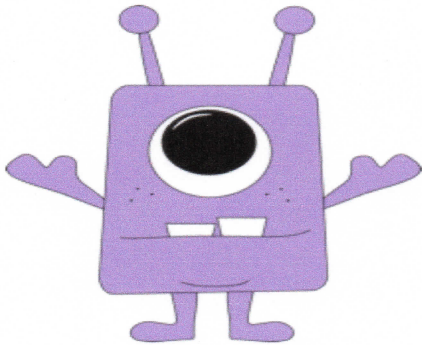
Sort the odd & even cards onto Twad's
or Shteven's Math Mats.



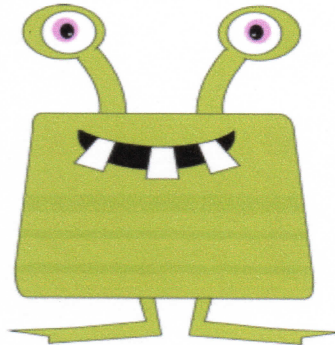
17



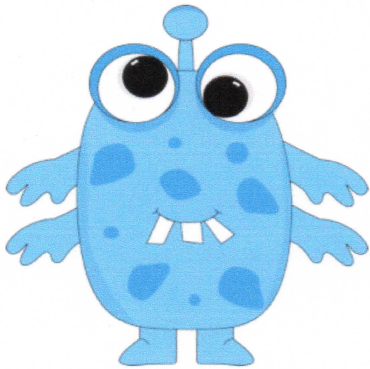
18



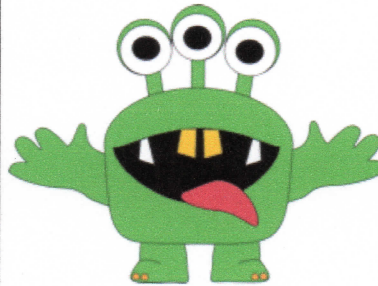
19



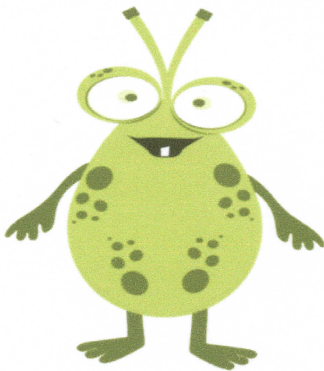
20



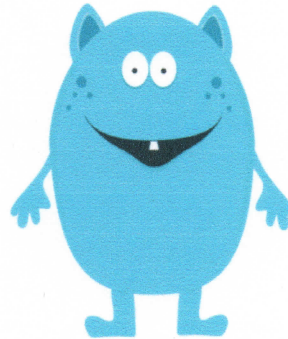
21



22

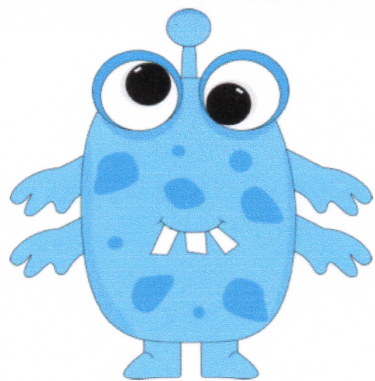


22

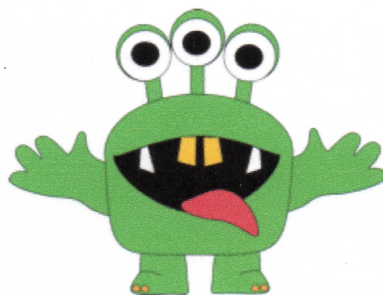


23

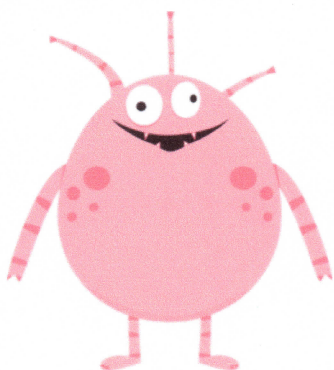
Sort the odd & even cards onto Twad's
or Shteven's Math Mats.



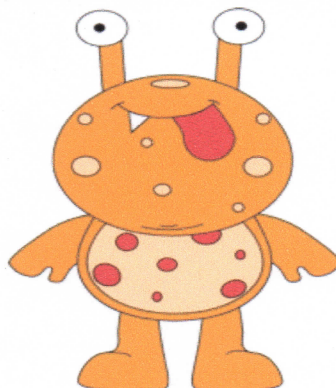
24



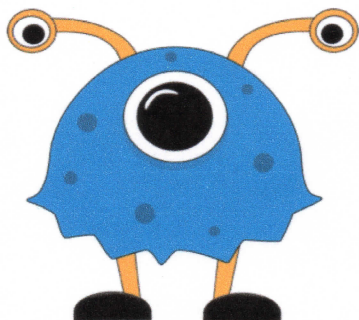
25



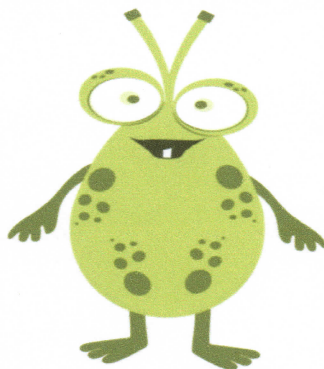
26



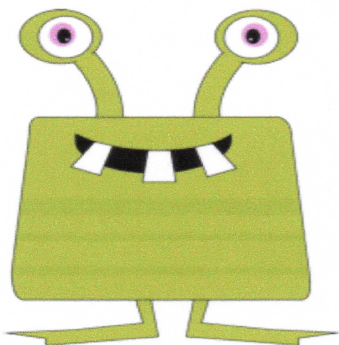
27



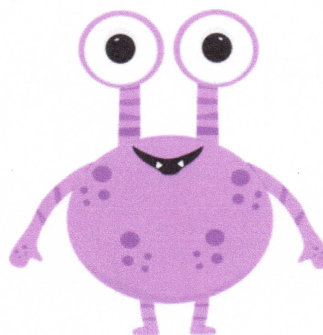
28



29



30

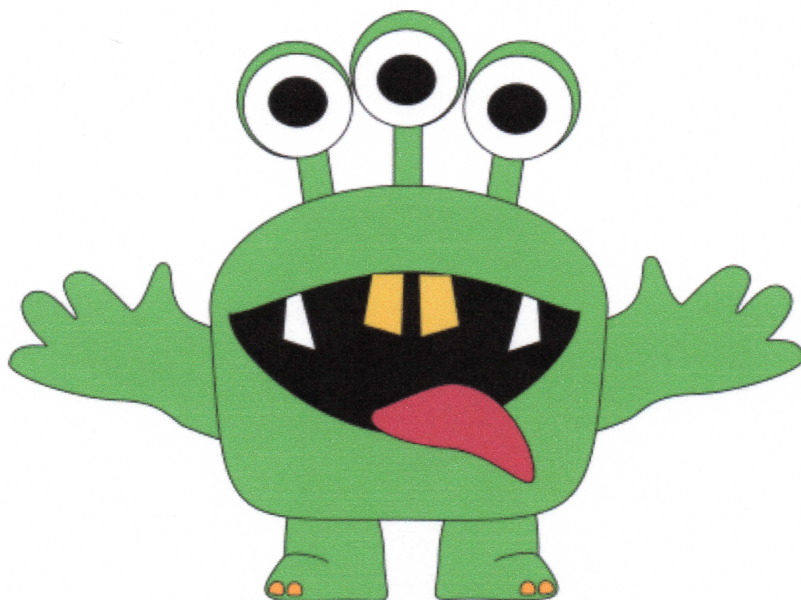


My Monster
Cards
Itty
Bitty Book

Sort the odd & even cards onto Twad's or Shteven's Math Mats.
You can also sequence and collate the cards to make an
Itty Bitty Counting Booklet.

1	2	3	4	5	6	7	8	9	10
11	12	13	14	15	16	17	18	19	20
21	22	23	24	25	26	27	28	29	30
31	32	33	34	35	36	37	38	39	40
41	42	43	44	45	46	47	48	49	50
51	52	53	54	55	56	57	58	59	60
61	62	63	64	65	66	67	68	69	70
71	72	73	74	75	76	77	78	79	80
81	82	83	84	85	86	87	88	89	90
91	92	93	94	95	96	97	98	99	100

High Light Odd Thwad's numbers with a **GREEN** high lighter so they match Thwad.



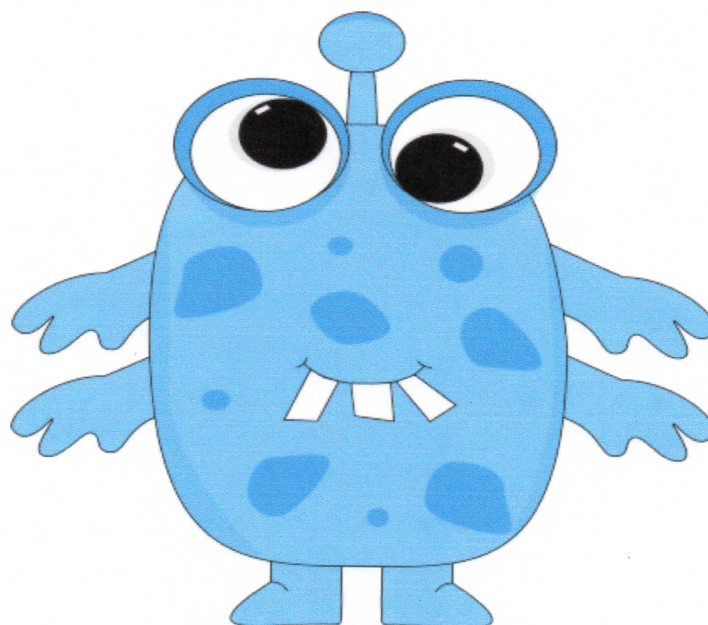
1	2	3	4	5	6	7	8	9	10
11	12	13	14	15	16	17	18	19	20
21	22	23	24	25	26	27	28	29	30
31	32	33	34	35	36	37	38	39	40
41	42	43	44	45	46	47	48	49	50
51	52	53	54	55	56	57	58	59	60
61	62	63	64	65	66	67	68	69	70
71	72	73	74	75	76	77	78	79	80
81	82	83	84	85	86	87	88	89	90
91	92	93	94	95	96	97	98	99	100

Odd Thwad's numbers are GREEN like he is.



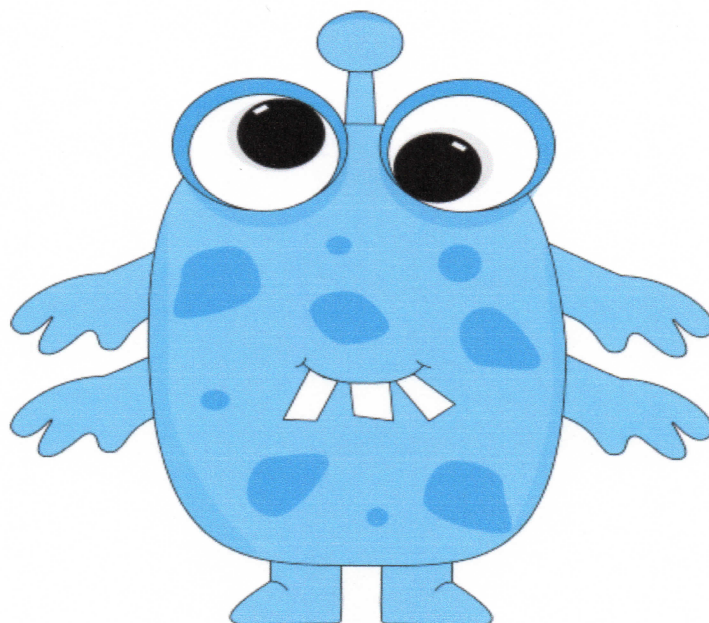
1	2	3	4	5	6	7	8	9	10
11	12	13	14	15	16	17	18	19	20
21	22	23	24	25	26	27	28	29	30
31	32	33	34	35	36	37	38	39	40
41	42	43	44	45	46	47	48	49	50
51	52	53	54	55	56	57	58	59	60
61	62	63	64	65	66	67	68	69	70
71	72	73	74	75	76	77	78	79	80
81	82	83	84	85	86	87	88	89	90
91	92	93	94	95	96	97	98	99	100

High Light Even Shteven's numbers with a **BLUE** high lighter so they match Shteven.



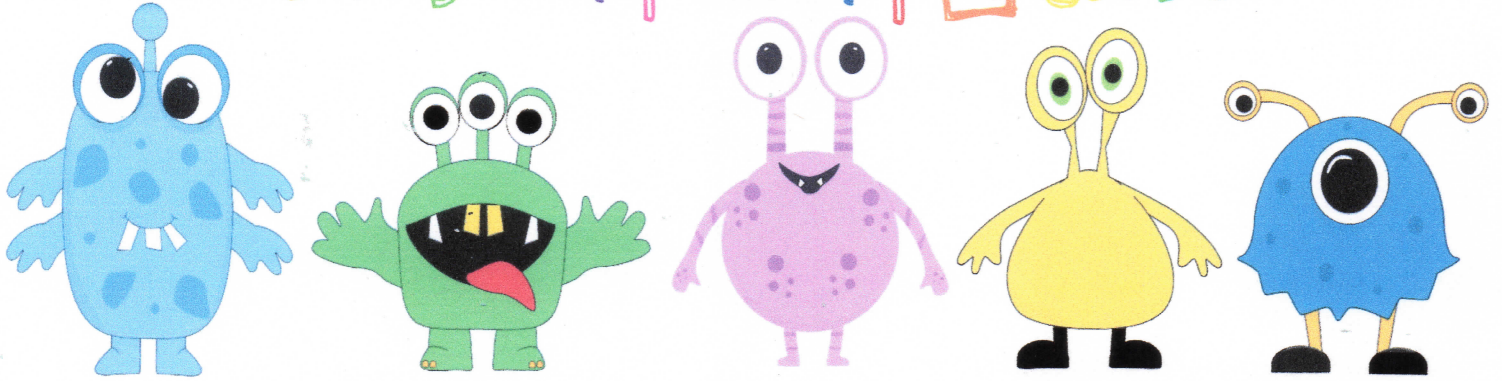
1	2	3	4	5	6	7	8	9	10
11	12	13	14	15	16	17	18	19	20
21	22	23	24	25	26	27	28	29	30
31	32	33	34	35	36	37	38	39	40
41	42	43	44	45	46	47	48	49	50
51	52	53	54	55	56	57	58	59	60
61	62	63	64	65	66	67	68	69	70
71	72	73	74	75	76	77	78	79	80
81	82	83	84	85	86	87	88	89	90
91	92	93	94	95	96	97	98	99	100

High Light Even Shteven's numbers with a **BLUE** high lighter so they match Shteven.



I can tell the difference between EVEN & ODD numbers!

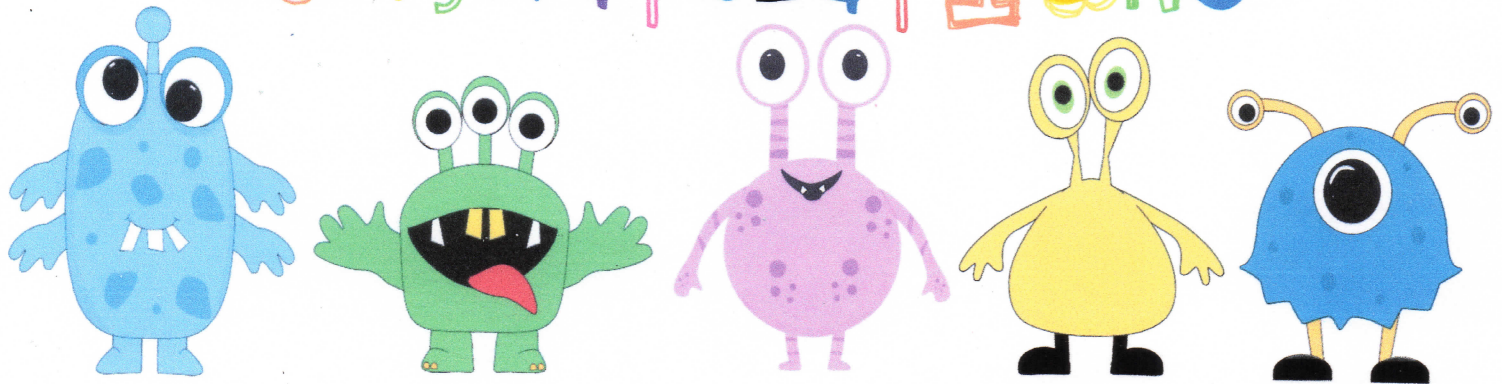
CONGRATULATIONS!



_____ does monstrously great work!

I can tell the difference between EVEN & ODD numbers!

CONGRATULATIONS!



_____ does monstrously great work!